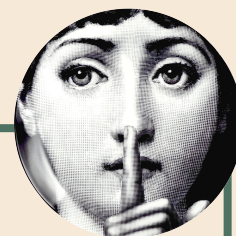


### To start, share or nibble



- Soup of the day (V) ..... £5
- Sprats with tartare sauce ..... £8
- Caesar salad, cos lettuce with or without chicken, croutons, boiled eggs, anchovies, dressing ..... £6/£7.5
- Smoked salmon platter, capers, shallots, properly garnished ..... £8
- Prawn cocktail with Marie Rose sauce ..... £7.5
- Quinoa salad, chickpeas and beetroot (V) ..... £7
- Roasted butternut squash salad, chillies, rosemary, chives, pumpkin seeds, goat cheese (VG) ..... £8
- Squid with aioli sauce ..... £8
- Chicken wings with barbecue sauce ..... £8
- Nachos with salsa, sour cream, guacamole, cheese, pickled jalapeño (V) ..... £10

### Mains

- Fish and Chips, minted peas, tartare sauce ..... £14.5
- Poached smoked haddock, crushed potatoes, poached egg, mustard, Beurre Blanc sauce ..... £15
- The Londoner Sausage and Mash, onion gravy ..... £14
- Corn fed chicken breast, mashed potato with buttered leeks, red wine jus ..... £15
- The Queensbury cheese burger served in a brioche bun with chips ..... £14.5
- Veggie burger served in a brioche bun with chips (VG) ..... £14
- Baked Aubergine, mozzarella, cheddar cheese in tomato sauce (VG) ..... £14
- Steak and kidney pie with chunky chips ..... £15
- Rib-eye steak, skinny fries, fine beans, peppercorn sauce ..... £18

### Sides

- Chunky or skinny fries (vg) ..... £4
- Creamed or wilted spinach(vg) ..... £5
- Gratin Dauphinoise (vg) ..... £6.5
- Courgette Provencal(vg) ..... £5
- Mashed potatoes(vg) ..... £5
- Sweet potato fries(v) ..... £5
- English tomato & red onion salad (v) ..... £5
- Mixed green leaf salad(v) ..... £5
- Pickled cucumber(v) ..... £4.5

### Desserts of the day

- Sticky toffee pudding with ice cream ..... £5
- Crème brûlée ..... £6
- Lemon Tart ..... £7

Please note our kitchen is NOT A NUT FREE environment and our fish dishes may contain bones. Please inform staff of any allergies or intolerances prior to ordering. An optional 12.5% service charge will be added to your bill.

(vg) Vegetarian (v) Vegan (gf) Gluten Free

110 Walm Lane Wilesden Green, NW2 4RS - 0208 452 0171